

Flowtech Industries AG Flowtech Services GmbH

General overview

2024

www.flowte.ch

Company Profile

- Flowtech Industries AG is an Engineering, Consulting and Manufacturing Company
- Flowtech is a team of experienced engineers in Fluid Dynamics and Mechanical Engineering with >25 years experience in all kind of fluid and flue gas processes
- Flowtech designs and optimizes flue gas units
- Flowtech supplies key components
- Flowtech maintains exhaust gas purification systems during operation and maintenance
- Key market fields are applications of all kind of flue gas processes

Market Fields and Processes

Market Fields:

- Power plants (coal, oil, gas, biomass)
- Incineration plants (waste, hazardous waste)
- Gas turbines / gas and steam power plants
- Refineries (treatment of process waste gases)
- Cement plants
- Engines (combined heat and power plants, marine)
- Ventilation of large buildings or halls
- Chemical reactions in large process plants

Processes:

- Catalytic denitrification (SCR)
- Non-catalytic denitrification (SNCR)
- Desulphurization (wet scrubbing, dry absorption)
- Dust removal (electrostatic / bag filters / cyclones)
- Heat extraction / steam generator surfaces)
- Chemical reactions of process engineering

Market Fields



Power Plants



Gas Turbines



Incinerators



Refineries

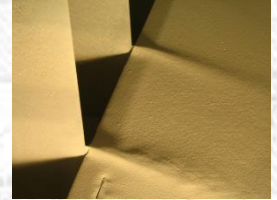


Chemical
Parks

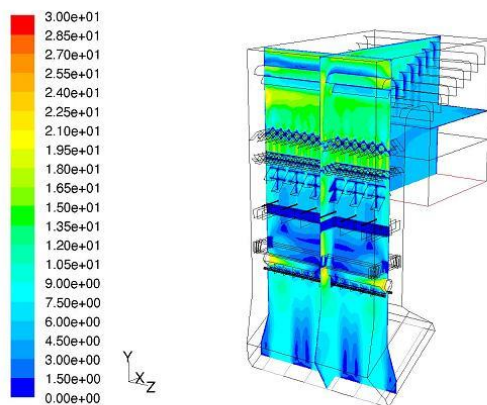


Engines

Product Overview - Experimental Flow Models in scale at Flowtech facilities

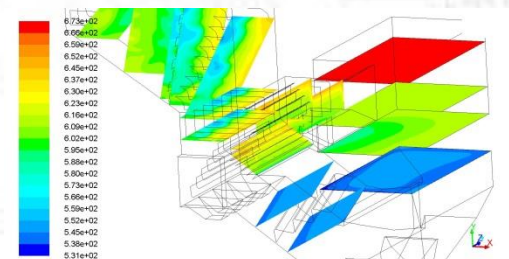
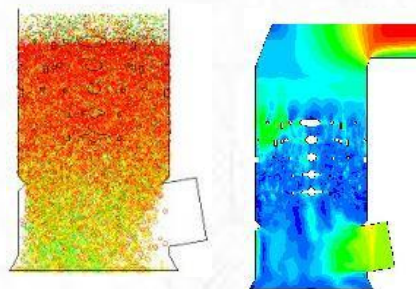


Product Overview - CFD (Computational Fluid Dynamics)



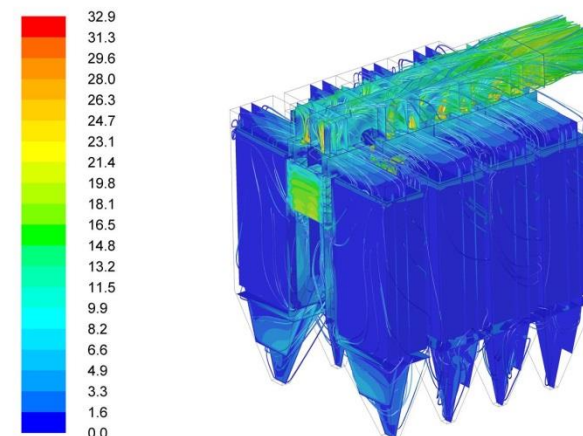
Contours of Velocity Magnitude (m/s)

Feb 13, 2007
FLUENT 6.2 (3d, segregated, spe, ske)



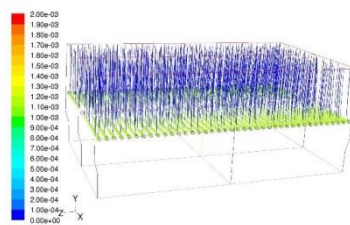
Contours of Total Temperature (K)

Mar 11, 2015
ANSYS Fluent 14.5 (3d, pbns, ske)



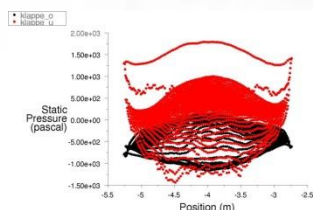
Pathlines Colored by Velocity Magnitude (m/s)

Mar 18, 2015
ANSYS Fluent 15.0 (3d, pbns, ske)



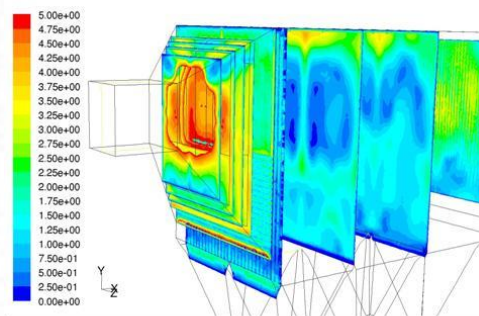
Path Lines Colored by Mass fraction of H₂O

Dec 21, 2008
FLUENT 6.2 (3d, segregated, spe, ske)



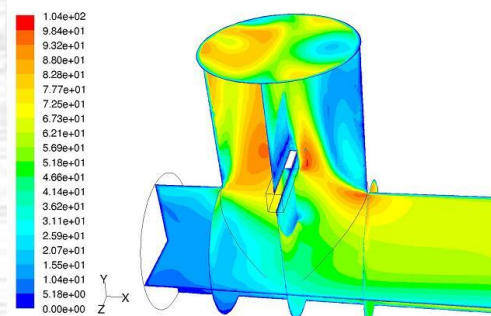
Static Pressure

Nov 03, 2008
FLUENT 6.2 (3d, segregated, ske)



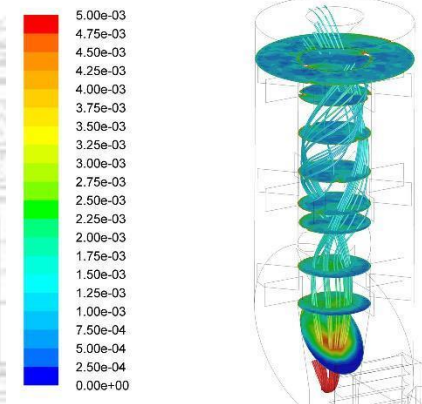
Contours of Velocity Magnitude (m/s)

Mar 23, 2007
FLUENT 6.2 (3d, segregated, ske)



Contours of Velocity Magnitude (m/s)

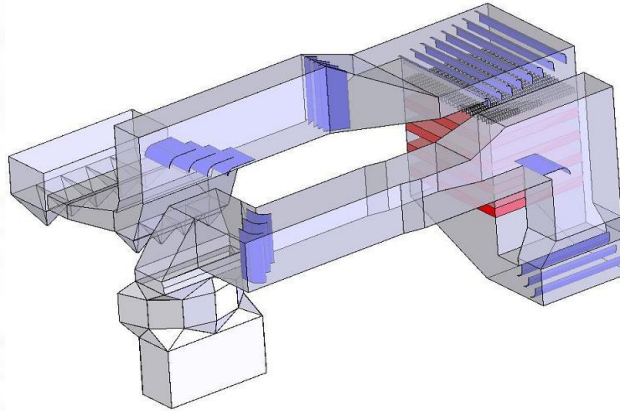
2006
FLUENT 6.2 (3d, segregated, ske)



Pathlines Colored by DPM Concentration (kg/m³)

ANSYS F

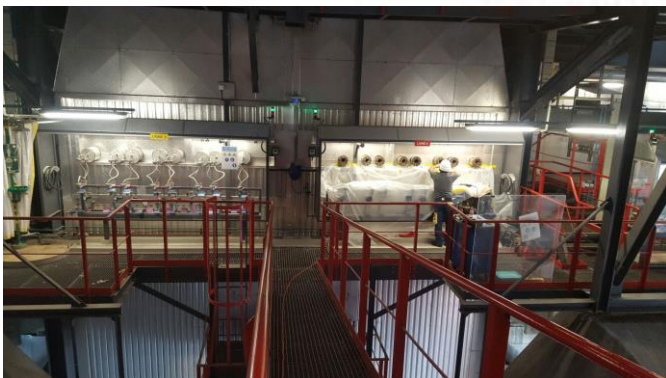
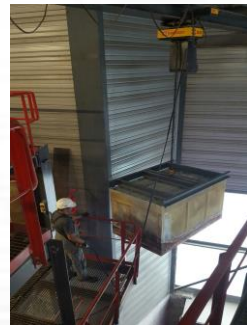
Product Overview – Engineering, Process Design, Consulting, Field Maintenance

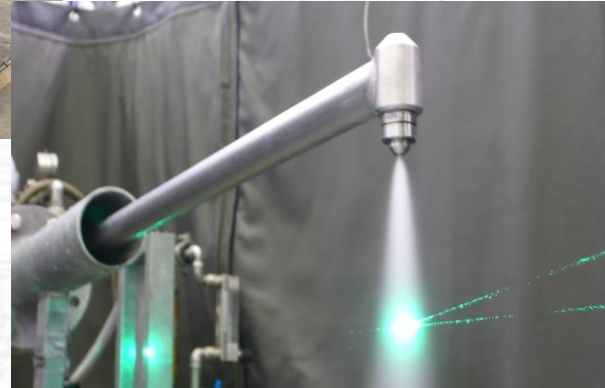


Product Overview – Supplier of Key Components



Area of installations, service/revisions (SCR/SNCR)





Flowtech applications worldwide



Characteristics of Flowtech

- Extensive technical know-how in the field of flow simulation and optimal flow control
- Wide technical know-how and experience in Process technology
- Activities in the area of service/conversions/revisions and maintenance
- SCR catalyst expert
- Manufacturing of own key components in the area of flue gas cleaning
- Flat, flexible and efficient organization with a highly motivated team
- Flowtech is looking for longtime customer relations